

Woodchase Park to Open for October Halloween Event

Contractor currently wrapping up landscaping and final site work



Renderings come to life: Woodchase Park is looking very much like the renderings created by park planners. The photo on the left shows the water play feature as it was envisioned, while the photo on the right is the water play feature installed.

After decades of dreaming, years of planning and 12 months of construction, Westchase District's Woodchase Park will open this fall. "This really is a dream come true for many of our board members and staff who have worked for years to bring this project to completion," said Irma Sanchez, Westchase District's vice president of projects.

The park will enjoy a soft opening in early October, as soon as crews from D.L. Meacham finish their work and turn the site over to Westchase District. Right now, they're installing the landscaping, exercise stations, dog park fencing and working to make the bathrooms and water fountains functional. Crews are installing the park's Wi-Fi, so guests will be able to stay in touch with their office, post selfies or even work from the park. And an emergency call box is being installed - one of twelve placed throughout the District, mostly on the trail system.

Vision comes to life

The park was originally conceived as a result of a 2004 Board Retreat that developed the following

vision statement: "The community is known for having entertainment/recreation amenities, and there are inter-connecting hiking, biking, and pedestrian ways, linking a set of community gathering areas."

In 2013 the District entered into a 380 Area Agreement with the City of Houston, which set aside millions of dollars in property tax growth revenue for City-approved infrastructure projects, giving Westchase District the financial boost it needed to develop large capital projects.

In 2016, the City of Houston allocated \$3.6 million to purchase two parcels in Westchase District for parks - Woodchase Park and a 3.4-acre parcel on Wilcrest. Construction will begin on Wilcrest Park later this year.

Once the land was secured, the District began the design process, which included community surveys and public input meetings to ask area residents what they wanted to see in these two parks. After that, the Office of James Burnett was hired to design both parks. Contractor D.L. Meacham was awarded the construction bid in 2020 and the site for what is now Woodchase Park was cleared in September of last year.

Bathrooms are just the beginning

Surveys and public meetings with area residents and stakeholders helped determine what assets would be part of the park. "Everyone's first priority was a bathroom," noted Sanchez. "We think they'll be happy with the bathrooms and so much more in the park," she added.

Woodchase Park features a fenced dog park, children's play area with a rock-climbing wall and misting feature, a community garden and walking paths, plus a pavilion, which will also be available to rent for private parties.

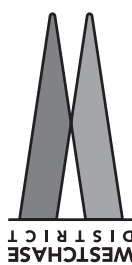
Westchase District staff member Louis Jullien recently transitioned from his position as Projects Director to Parks Programming Director and he's already at work bringing a whole host of programming options to the park.

Planned programming includes Tai Chi (offered by Four Dragons Tai Chi) and Zumba, boot camp and yoga (offered by Tropea Z Fitness). A host of art and music activities for all ages will be offered by Young

(Continued on Page 8)



10370 Richmond
Suite 1350
Houston, Texas 77042
westchasedistrict.com



IN THIS ISSUE:

- 2 Meet our newest staffer
- 3 It's all in the (farmers market) family
- 4 Mexican Consulate opens
- 4 HPD sergeant patrols Westchase
- 5 Breakfast just got better
- 6 New apartment community underway
- 7 Westheimer bus shelters installed

WESTCHASE TODAY is published quarterly by Westchase District, a municipal management district funded by local property owners in a 4.2 square-mile area centered on the Sam Houston Tollway between I-10 and US-59 on the west side of Houston, Texas. We promote economic growth by enhancing mobility, beautification, public safety, planning and development of the District.



Dave Gilkeson
VP, COO

Irma Sanchez
VP, Projects

Sherry Fox
VP, Communications

Louis Jullien
Parks Programming Director

Chester Jacinto
Communications Director

Kelly Aylesworth
Maintenance Director

John Carey
Farmers Market Manager

Mark Hubenak
Public Safety Director

Rayshell Ford
Operations Assistant

Disa Lyon
Administrative Assistant

Receive *The Wire*, our e-newsletter, twice monthly. Three quick and easy ways to subscribe:

1. Visit www.westchasedistrict.com/signups,
2. Text WESTCHASE to 22828, or
3. Use your mobile device to scan the code below.



713-780-9434
westchasedistrict.com

Copyright © Westchase District. All Rights Reserved.

Verbs starting with P

Reviewing all the progress on Westchase District's various projects can be a bit overwhelming, even to those of us who pay fairly close attention. Pieces are falling into place and the whole is indeed becoming far greater than the sum of its parts. Westheimer is a great project in and of itself, but it links directly to the Elmside/Woodchase side path which takes people directly to Woodchase Park which is on the trail system which connects to METRO's Park and Ride Lot and...you get the idea. Yes, there is a plan behind all this and as we wrap up our 25th year, it helps to take a step back, get some perspective, and reimagine where we can go from here.

Our cycle of planning for Westchase District has involved five stages: Pondering, Proposing, Performing, Persisting and Perfecting. The 5 P cycle. Different programs can be at different stages and the progression to the next stage can vary. What has allowed us to prevail is a strong sense of mission and incredible teamwork. Our team consists of our Board, the Westchase District staff, our patrol officers, and our consultants. Each has a role to play, and you can read in this issue about Disa Lyon, a new addition to the staff, who is a consummate team player.

Our Long-Range Plan, that led to the Westchase District 380 Program, is a great example of this 5P cycle. The Westchase District Board held a retreat in 2004 where they conducted several directed modules for Pondering our role, the market, the future and how we could deliver value to our stakeholders. Tip of the hat to Joe Synan who facilitated this retreat and has done so numerous times since then for both board and staff. We consciously supplement our team with high-impact consultants who can help us get to that next level. We then assembled a team of professionals who spent nearly two years Proposing how we could achieve the Board's vision and in this case were assisted by Steve Spillette who functioned as our Project Manager and an extension of our staff. We then turned to our marketing and advertising guru, Bob Rehak, who led the effort of creating the documentation to sum up two years' work and present it in a high-quality and compelling format.

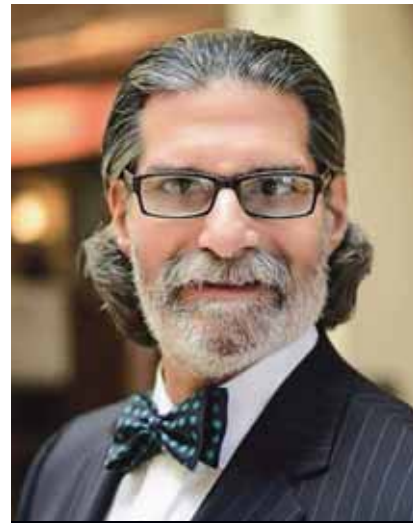
As the plan went on to win several awards, and become the model for HGAC's Livable Communities Program, it is safe to say Bob was quite successful.

The element of Performing fell to the District staff as they executed the plan. Key to this work was the annual process with our Board committees as they reviewed progress, monitored budgets, and developed goals for the following

year. These component pieces - our Public Safety, Communications, Beautification, Mobility, and Administration Programs - are the day-to-day way we impact our community. The concept of Persistence comes into play here as unforeseen problems disrupt plans and timing, but with sustained effort, they can be successfully overcome.

We find ourselves to a large degree to be in a Perfecting mode when it comes to infrastructure. Major projects are nearing completion and we are searching for ways to enhance their beneficial impact. Teaming up with METRO to make improvements to Westheimer to better support transit operations is a great example. METRO became a true partner in the project and their support leveraged our investment and added new benefits. Our patrol officers started out reporting data to our new public safety app with iPads. But they transitioned to iPhones to free up a hand, while making their reporting easier, faster and more readily available to management. It just gets better, moving toward perfect.

The next 25 years will be even better as these programs and Westchase District mature and evolve. And we'll continue repeating our planning cycle, one stage at a time.



Westchase District Board Chair Harry Greenblatt

From Law to Finance and Administration, Lyon Hits the Ground Running

Newest staff member adds depth to the team

Disa Lyon is the newest member of the Westchase District team, having joined the staff last September as administrative assistant. Lyon handles finance and administration responsibilities and has been described as "integral," earning Staffer of the Month recognition twice since joining the team.

On any given week, she processes 25-35 invoices, plus payroll for ten full-time staff and more than 30 Westchase District Patrol officers. "She has been a gem to work with," said Dave Gilkeson, Westchase District's chief operating officer and vice president. "We were very fortunate to bring her on. Her qualifications are exemplary - she has incredible chemistry with our entire team."

On the right track

Many years before coming to the District, Lyon understood that there are moments to seize in life. That's because she lived a more hectic pace before slowing down. Lyon, who received a full track scholarship to Rice University, knows about going the distance. At Rice she was a year-round athlete, running cross country in the fall and indoor track in early winter to train for track season which began in late February. Track

continued even after her semester ended with national competitions held in late June.

"Being an athlete in college gave my life structure and I was more efficient with studies," said Lyon. "We had two-a-days; I got up every morning and ran three miles. The real workout was in the afternoon. The only time left to study was after workouts, so I never had the luxury to procrastinate."

A special break with mom

Upon graduating Lyon had the adventure of a lifetime. "My mother took me to England, Scotland and Ireland when I graduated from college," said Lyon. "It was a three-week trip driving around the different countries, never staying more than one night in any one city. This was the first time I had been to Europe but even more memorable, this was the most time I had ever spent one on one with my mother. Being third of seven children, we rarely got time alone with just one parent."

Putting career on hold for family

Lyon earned her law degree from University of Houston and began a seven-year career with



PEAS Farm a Family Operation

Three generations contribute to its success

PEAS Farm has been an anchor vendor at the Westchase District Farmers Market since the market began. For this Conroe-based grower, bringing produce to market is a full-fledged family operation – one where even grandchildren play a role.

It didn't start that way. According to PEAS' matriarch and founder Patricia d'Agrella, becoming prolific farmers was something she and husband Elvis had to learn. "We started by growing for our family," said d'Agrella. "I thought we were doing a poor job as we did not ever seem to have a large crop."

Making the farm work took on a more vital role when Elvis lost his full-time job. "There was a learning curve for us going from backyard gardening to growing for others," said d'Agrella. Further, the couple's daughters had gone off to college. "When they came back for summer, they wanted to know where all the veggies were. We realized that we were eating more than we were picking."

PEAS' name represents family members Patricia, Elvis, daughter Ashley and son-in-law Steven. Twelve years later, the farm is growing stronger than ever with a more diverse variety of crops. They grow what d'Agrella describes as 'essentials' – tomatoes, cucumber, squashes, potatoes, onions and berries. "We also try new varieties each year as well as some unusual ones," said d'Agrella, who listed

turmeric, dasheen, long beans, heirloom tomatoes, lemon cucumbers and herbs. "Over the years, we have tried to use our seeds whenever we can, but always using non-GMO organic."

A week in the life of a farmer

For the d'Agrellas, Sunday is the day to see what the harvest holds. "Every Sunday we try to walk the fields and see what is coming ready," said d'Agrella. "We harvest just about every day. The harvest is washed, separated and stored in preparation for markets. There is also weeding, planting, looking at seed catalogs."

Other necessary duties include repairs of high tunnels, tractors and fencing plus seasonal chores like trimming, pulling honey and fixing bee boxes. There are also repairs to chicken coops.

"I do most of the canning," said d'Agrella. "I enjoy it and I can do it indoors. There are times though when we have a lot of veggies, so we call everyone in to help. Some things like soaps and candles we do on rainy days or during the winter when it is slow. I am currently working on a line of fermented foods like sauerkraut and vegetables. These are so good for you and taste great. They remind me of my grandparents."

Family strength and future generations of farmers

With three farms under its ownership, PEAS Farm is completely family-run and mirrors models for successful family-owned businesses. "Everyone helps when a job needs to be done," said d'Agrella. "We have shown them how by doing the work together. Ashley and Steven work most of the farm these days as well as pulling orders and doing the farmers markets."

"The grandchildren have been part of this operation since they could walk," said d'Agrella. "They plant, work with customers at markets and help plan for next

year's crops. This year they even had their own parcel of land to grow what they wanted." As a result, the operation has provided life lessons. "They have learned that you have to work hard and know how to budget money," said d'Agrella. "Some days or times of the year are busier than others. During these times we get our other children and grandchildren involved."

Adapting to customers' needs

PEAS has augmented its farmers market presence with an online store that offers preordering and delivery options. "This has turned out to be a blessing," said d'Agrella alluding to business that slowed due to COVID. "We are going into our second year for e-commerce and are able to plan better based on sales and can control our harvesting."

Succession plans

For dozens of markets, Elvis was a fond and beloved presence at the market. In early 2020, he decided to stay at the farm and let his children run the markets. "He is looking at running his first triathlon along with his three daughters and a granddaughter," said d'Agrella. "He is enjoying being a grandfather and great grandfather. We often watch our little ones. He also likes going to the track meets and games of the older ones."

"Our goal when we started was for each of us to quit our day job and work the farm," said d'Agrella. Eventually everything will be turned over to Ashley and her husband Steven. "Our hope is the grandchildren will want to continue as well. A couple have expressed high interest."



Young entrepreneurs: Elvis and Patricia's granddaughters Natalie and Paige make and sell snow cones at the market.



All in the family: Elvis and Patricia d'Agrella (seated, center) with three generations of their family.

Westchase District Farmers Market

Year-round, rain or shine, Thursdays @ 3 p.m.

St. Cyril of Alexandria Catholic Church

10503 Westheimer Road (at Rogerdale Road, one block west of Beltway 8)

www.westchasedistrictfarmersmarket.com

Butler Binion, the firm of record representing Enron. Her practice area was real estate law. With Enron's collapse, the firm soon closed its doors. Before the firm shuttered, Lyon had moved on to another firm working on another high-profile issue: the savings and loan crisis.

"I practiced law for about seven years and ended up taking a 21-year break from working," said Lyon, who decided to become a full-time parent. Married to George for 30 years with two sons, Nathaniel and Ethan, she hasn't practiced law since her first son was born.

Lyon is proud to be a life-long resident of Houston. "I like the weather: it never gets too cold," she said. "There are so many things to do in the city: a vast library system, arts district, museums, just about any type of food can be found, people are friendly. I like all the greenspace, especially the running/biking trails in Memorial Park, Terry Hershey Trail and George Bush Park."

As for working at the District, Lyon finds her colleagues inspiring. "They work hard and are driven to do their best," said Lyon. Whether it's running, parenting or working, Lyon shares those ethics. It's easy to see how she has melded so well with her new colleagues.



I got all my sisters and me: Disa Lyon (second from left) planned this year's annual vacation in historic Charleston, S.C., for her sisters Galin Morgan, Tara Lewis and Beryl Gibson.

Consulate General of Mexico Opens Doors in the District

New building expands amenities

Westchase District became home to another Consulate General this year when the Consulate General of Mexico opened its new Houston headquarters at 10555 Richmond Road. The Consulate General of Mexico joins consular offices for Indonesia and the Philippines, also located in Westchase District.



Community partnerships: From left, Consul General Alicia Kerber Palma with American Red Cross of the Texas Gulf Coast CEO Henry Van de Putte III celebrate a partnership agreement to carry out education, prevention and training activities in the community.

Last year marked the consulate's 100th year in Houston. The Houston office is one of Mexico's largest diplomatic representations in the United States. The new office has 50,000-square-foot, four floors and multiple areas to serve the public -- doubling the space the consulate had at its previous location at Interstate 69 and San Jacinto.

During the headquarters opening, Mexico's Minister of Foreign Affairs, Marcelo Ebrard Casaubón, came to Westchase to officially celebrate the opening. Casaubón said the new building is state-of-the-art and brings "better services for both Mexicans and people interested in Mexico."

collaboration between Mexico and Houston as key for bringing this service.

Individuals may make appointments for consular services that are completely free, personal and non-transferable through the Mexitel system (mexitel.sre.gob.mx). This service helps people avoid fraud when scheduling appointments through external agents who can misuse personal and confidential data, while misinforming about the requirements to obtain important documents.

"We are committed to prioritizing the timely and permanent attention of a Mexican community in Houston that exceeds two million people in 37 counties," said Kerber Palma. "For this reason, the Consulate General of Mexico in Houston is making important efforts to provide uninterrupted services during this brief transition."

Plentiful parking

The new Consulate General of Mexico has its own parking lot and is easily accessible via car or METRO's 25 route stops at the corner of Richmond and Rogerdale. "One of the frequent concerns of our users was finding a parking space when coming to the Consulate, which made them vulnerable to abuse from people who sold spaces at exorbitant prices," said Kerber Palma. "Having a completely free parking space for the time that the person remains in our facilities is one of the many improvements incorporated, responding to the changing needs of our community. This new location will allow us to serve Mexican nationals and guests in an efficient and safe manner."

In its 100 years, the consulate has become a safe and trustworthy space for Mexicans, Mexican Americans and Hispanics, as well as a reference for implementing initiatives in favor of the entire Houston community. They are a welcome addition to Westchase District.



New HQ: The Consulate General of Mexico relocated to new headquarters after completely renovating the building at 10555 Richmond.

Serving people efficiently, safely

The move will offer greater functionality and accessibility to the consulate and its services, which include legal assistance, aid with vital records and travel documents. The consulate has also provided free COVID vaccinations and tests for almost 5,000 people. Consul General Alicia Kerber Palma credited a strong

Growing on the Job with Sergeant Jeff Sneed

Having youthful looks didn't make Jeff Sneed's job any easier when he was a rookie police officer for the Houston Police Department. Sneed went from high school in Pearland to earning his welding degree from San Jacinto College. By age 19 he worked as a jailer and then went on to the Police Academy where he graduated at 21.

"Being a rookie, I was assigned to the older blue police squad cars, whereas other officers had the new white vehicles," said Sneed. "I patrolled southeast Houston and looked really young back then. When I would respond to calls, people would not believe I was an officer. They would tell me to leave until the 'real police' showed up." Faced with an unconvinced audience, Sneed would call another unit to the scene.

In between getting his degree and preparing for law enforcement, Sneed learned team roping in North Texas at his uncle's ranch. He bought and sold a horse at the same time.

A leader on the patrol

Going on 15 years with HPD and nine years with Westchase District Patrol, Sneed has settled in. He's married with three children and works out with his oldest son who plays football in high school. Recently promoted to sergeant, Sneed is known by many now in the District community. His parents both worked at HPD. Sneed's mother is a former HPD dispatcher and his late father retired after 36 years on the force.

"I enjoy the community policing approach we take," said Sneed. "You really become familiar with people in apartment communities and businesses. That gives them an assurance about what we do."

A member of the HPD Gang Division's Crime Reduction Unit, his beat is citywide as murder rates in Houston have gone up. Sneed is also a member of a unit that works narcotics activities and violent crimes. "It's proactive policing and involves special assignments including any felony crimes," said Sneed.

From stakeout to scavenger hunt

"When I transition to Westchase District for my evening shift, it's a nice break," said Sneed. "There aren't any gangs here and patrol work is not as intense. People in the community see us and appreciate our work. They are happy to see me when I stop by and check in."

Sneed enjoys being there for activities like watching Quillian Center summer campers who took to the Westchase District Trail System for a scavenger hunt. He didn't mind maintaining a watchful eye even after he had just completed an all-night shift keeping a murder suspect under surveillance. The case ended with a capture and arrest. Two hours later Sneed was escorting young kids off a bus onto the trail. The activity gave the campers an opportunity to meet an HPD officer.

When Sneed is off the clock, he enjoys spending time with his three kids. A family favorite is hitching up the camper and parking it at the beach.



Change of scenery: Veteran HPD officer Jeff Sneed with summer camp students from Camp Quillian.

Eggcellence Café's Menu Crafted for Breakfast to Lunch Crowd



Room for breakfast: At Eggcellence's 10001 Westheimer café, there are plenty of menu items to fill you up for the most important meal of the day.

Shopping Center. One step inside and the baked aroma emanating around you gives one impression: don't rush this meal. As you'll see from the tables and spaces, this isn't dine and dash, quick service. "We want you to sit and enjoy," said manager Sandra Campos.

Go big and go home

The café does go big on the menu with brunch-style entrees like the Texas Sampler, served with two fresh farm, cage-free eggs, Applewood smoked bacon, pork sausage links, ham slices and hash browns, plus two buttermilk pancakes. That's plenty of food to keep you full through lunch. Other Texas favorites include Huevos Rancheros with hash browns or fried potatoes or Creole Shrimp and Grits. Chicken Fried Chicken and Gravy or Biscuit and Country Gravy give the café a touch of hearty, home-made cooking.

The menu features five styles of pancakes, from berry, whole wheat nut to a chocolate lovers pancake topped with chocolate sauce, whipped cream and filled

It's said that breakfast is the most important meal of the day. If so, a relatively new restaurant in Westchase District has got your mornings covered. With a thoughtfully prepared menu seven days a week, Eggcellence Bakery & Café caters to early morning and late morning appetites.

Eggcellence opened two years ago at 10001 Westheimer Road in the Carillon

with Kit Kat crunch. Eggcellence didn't forget about waffles either. It serves Belgian style waffles that can be ordered with fried chicken. Egg crepes augment all the other menu choices.

There are plenty of choices for diners on the go as well. You'll find an espresso bar, fresh squeezed juices and power smoothies to energize your body.

Lunch options entice

In the mood for sandwiches? You're in luck here. From a avocado BLT croissant sandwich to burgers, Eggcellence doesn't limit diners to classic breakfast choices.

"This location was among the first that opened in Houston," said Campos. Found only in the Houston market, Eggcellence has seven other locations. "We like the traffic and visibility we get being on Westheimer," said Campos.

Eggcellence doesn't serve dinner but that's by design. "People are coming in throughout the day because our menu is versatile," said Campos. "It's food you would eat either for breakfast or lunch or both," she said. Campos added that all the meats served are Halal. "We take great pride in our homemade batter," said Campos. "Our batter makes our waffles and pancakes a star attraction."

Although COVID reduced the restaurant's traffic after it opened in November 2019, Campos is optimistic that the office workers who warmly received the restaurant will gradually return.

Campos said that Eggcellence is on its way to becoming a prime gathering spot. Groups in the community come in for coffee or to eat because of the restaurant's relaxing atmosphere, Campos said. The restaurant has high ceilings and a bright interior, emitting a lively atmosphere. Fun, egg-shaped chairs greet diners while leather love seats are the perfect spot to sip coffee. There's also an outdoor covered dining patio.

Eggcellence

10001 Westheimer
832-804-7253 • eggcellencecafe.com



Brunch style: This chicken crepe dish can be eaten for breakfast or lunch.



Bright side up: Eggcellence's dining room has a bright, fun interior.

Community Impact Nominations Sought

Tell us who has had an impact at your organization



Community Impact Awards

Westchase District will present its 4th annual Community Impact Awards in January 2022, recognizing individuals in our community who represent the best of Westchase District.

The award program was created in 2018 by the Westchase District's Advisory Board. Nine community citizens have been recognized during the three years of the program. They include: Verita Duncan, WHAM; Blair Johnson, Blair Johnson Wellness; Tiffany Schreiber, Literacy Advance; Gwyn Buzzini; Beverly Okosun, Quillian Center; Gerry Ross, Literacy Advance; John Barton, Literacy Advance; and Rita Flores, Quillian Center.

In 2020, the Advisory Board recognized West Houston Assistance Ministries as an organization for all that its staff and volunteers have done to assist the community throughout the pandemic.

Tom Gaden, executive director of the Quillian Center serves as chair of the Advisory Board. "The board felt that there are many unsung heroes in Westchase District. This program seeks to recognize and honor the individuals and organizations who exemplify the best of our community."

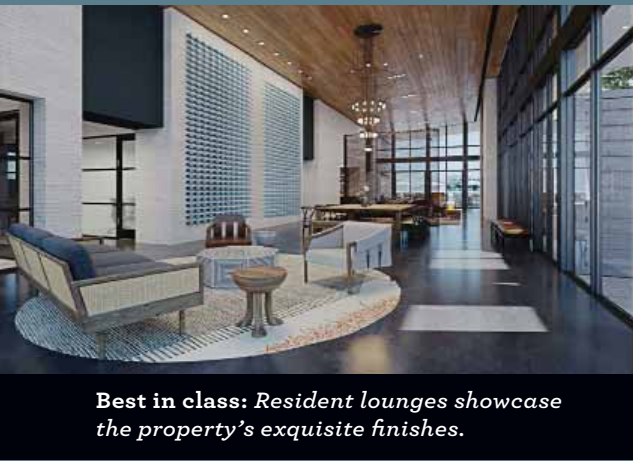
Nominations for the 2021 Community Impact Awards are due Friday, October 29th. Nominations can be made via an online form that is available at westchasedistrict.com. The awards will be presented in January 2022 at the regular meeting of the Westchase District Advisory Board.



Big impact: 2020 award recipient Rita Flores accepts her award from Advisory Board Chair Tom Gaden. "Ms. Rita" as she is known to the Quillian kids was recognized for her exceptional work to keep the Quillian Center summer camp environment clean and sanitary, allowing the camps to operate during the COVID-19 pandemic.

McNair Interests to Develop Remy on the Trails

New apartment community a first-of-its-kind in Westchase District



Best in class: Resident lounges showcase the property's exquisite finishes.



Lakefront living: A lake for kayaking, paddle boarding and fishing is central to Remy on the Trails' design.

A major new multifamily development is coming to Westchase District, offering its future residents a living experience they can't find anywhere else. McNair Interests, a real estate developer and private investment and management company, broke ground this summer for Remy on the Trails. The community will be the first phase of a 24-acre residential development built alongside a private lake. Abounding with amenities, the property will cater to individuals who enjoy active lifestyles.

Prime property with magnificent details

McNair Interests is developing the property on one the largest vacant tracts in Westchase District. Located at 400 W Sam Houston Pkwy S on the southwest corner of Deerwood Drive, Remy on the Trails will offer 400,000 square

feet for lease in the first phase. The 330-unit multifamily community will feature one- and two-bedroom apartment options in three- and four-story buildings.

The project team includes The Preston Partnership (architecture), Mayfield and Ragni Studio (interior design) and Kimley-Horn (landscape design). Central to the

design is a secluded three-acre lake with a private walking trail and dock for paddle boards, kayaking and fishing. Residents and guests of Remy on the Trails will enjoy convenient access to the Terry Hershey Trail. The District recently completed a two-way bike lane immediately adjacent to the site that connects to the Terry Hershey Trail.

"People with healthy lifestyles want to spend more time outside around Houston's great parks and trails," said Drew Steffen, McNair's senior vice president, real estate. "The approach for Remy on the Trails is to maximize options for outdoor livability. We designed this community as an urban oasis with flexible indoor-outdoor amenities, and integrated work and play spaces."

Features include an expansive club house and resident lounges, which spill out onto the deck of the infinity pool overlooking the lake, an indoor gym with adjoining outdoor fitness area, bike storage centers and outdoor entertainment spaces. Pet-friendly design elements incorporate a dog-washing facility and two dog parks.

Built for active lifestyles

Steffen said residents will also have access to a highly secure and private indoor and outdoor Wi-Fi network, meaning residents can always stay connected at strong speeds suiting their needs, whether its for business or entertainment. Additional features include event areas and a separate building for flex office space that includes private offices, open seating and conference rooms. Residents will enjoy best-in-class finishes, air-conditioned corridors, and keyless smart-locks at all unit entries. All buildings on the campus will be served by elevators and have private garages and surface parking. The larger master plan includes additional mixed-use elements, including on-site food and beverage retail.

For McNair Interests, the site's location was a huge draw. "We wanted to locate Remy on the Trails between the job concentration of the many employers in the Westchase District and other surrounding areas such as the Energy Corridor, CityCentre and Memorial City," said Steffen. "Westchase District has also shown a commitment to connecting the neighborhoods to the parks and trail systems, making this location an ideal candidate for the lifestyle-driven residences of Remy on the Trails, which includes a direct connection to Terry Hershey Park right at our front door."

Greenspace for Westchase Campaign Hits Goal

Major corporate donor claims park naming rights

When Woodchase Park opens this fall, it will be the first of two planned parks in Westchase District. While Woodchase Park is designed to be a neighborhood park, Wilcrest Park will be more of a destination for all of west Houston.

With a bigger park comes a bigger price tag. Wilcrest Park will feature a children's play area, performance pavilion, dog park, botanical garden, exercise stations, public art, an area for table games, a dining facility, parking for food trucks, restrooms and a 30,000-square-foot activity lawn perfect for movie nights, yoga, tai chi and concerts.

The Greenspace for Westchase campaign was created to cover the \$3.2 million gap in funds necessary to complete Wilcrest Park into a regional destination. The park is in final design and the District's board is expected to award a construction contract for the park in December.

"Our corporate community was very generous in supporting the Greenspace campaign," said Parks Programming Director Louis Jullien, who headed up the capital campaign. "Their support and the support of Houston's philanthropic community combined to put our fundraising campaign over the top of our stated goal."

Leadership gifts beget naming rights

Some leadership gifts included naming rights for an element in the park. H-E-B sponsored the Performance Pavilion. Phillips 66 sponsored the Promenade. BGE sponsored the Outdoor Reading Room. CenterPoint Energy sponsored the Water Play Zone, Green Mountain Energy Sun Club sponsored the Botanical Gardens and Perry Homes sponsored the Seating Grove.

Other leadership gifts were pledged by Lockwood, Andrews & Newnam, Park Eight, Texas Parks & Wildlife, Stedman West Foundation, The Brown Foundation, The Sunderland Foundation and The Cullen Foundation.

Meanwhile, a major new corporate donor has recently made a substantial donation and claimed naming rights to the park. "We'll announce the park's new name and brand later this year," said Jullien, who noted that there are several elements in Wilcrest Park where a named sponsor can still be recognized. They include the event lawn, dog park, children's play area, exercise station, table games area, water play zone and food truck terrace.

There is also a community giving element to the Greenspace campaign that allows individuals and smaller companies to be recognized for their donations. Visit wdfund.org/greenspace for a complete list of donors and more information about donating to Wilcrest Park.



Outdoor entertainment: The performance pavilion at Wilcrest Park is sponsored by H-E-B.



Walk on by: The promenade around Wilcrest Park is sponsored by Phillips 66.

Westheimer Streetscape Project Nearing Completion

Distinctive bus shelters complete the look of Westheimer

If he were alive today, Mitchell Louis Westheimer would not recognize his namesake road. Mr. Westheimer (1831-1905) donated a portion of his land to Harris County to develop a road for farmers in the Alief area to transport their cotton, rice and other farm goods to Houston and beyond.

Today, Westheimer Road is the longest major thoroughfare in Texas and home to METRO's most-popular bus route. Its eight-lane divided design is being enhanced by a Westchase District project that will completely transform how the street serves motorists, pedestrians and transit riders.

Except for the addition of new mast arms to replace the existing span wires, the Westheimer project won't have any effect on the roadway itself. But it will have a big impact on pedestrians and transit riders. "We're adding new, wider sidewalks, new pedestrian lighting, custom bus shelters and landscaping that will benefit pedestrians and the Westheimer retail experience," said Irma Sanchez, Westchase District's vice president of projects. "These improvements will enhance the retail space, better support transit operations and improve connectivity for pedestrians, all while making this major roadway more distinctive and attractive."

Distinctive transit shelters added

The new transit shelters are made of aluminum and impact resistant glass. They will become the new standard for Westchase District and will also be installed on Walnut Bend Lane, Elmside Drive and Woodchase Drive. The shelters feature seat blocks made of a concrete blend with a glossy finish, LED lighting, special paving, trash cans and upgraded signage. "These shelters are being installed under a partnership with METRO," added Sanchez. "METRO contributed what they would have spent on shelters toward the cost of these new shelters."

All transit stops on Westheimer are being re-built with 9-inch curbs. "The higher curbs mean that buses don't have to 'kneel,'" said Sanchez. "That means boarding times are quicker and lane stoppages are minimized."

All of the shelters, sidewalks and curbs are also ADA-compliant. The new pedestrian lighting and traffic signals on the mast arms will be turned on in the next



Shady rest: The first of 17 custom bus shelters have been installed on Westheimer Road.

few weeks. And the remaining transit shelters will be installed this fall. The project will wrap up in late 2021, with some landscape improvements still to come.

The \$16-million Westheimer Streetscape project includes \$10.3 million in federal funds and \$5.8 million from the 380 Area Program with the City of Houston.

Asian Chamber of Commerce Celebrates 30 Years

According to the Houston Area Asian Survey conducted by the Kinder Institute of Urban Research, Harris County's Asian population increased by 76 percent between 1990 and 2000, and then by 45 percent over the next decade. Right as the growth spurt began, the Asian Chamber of Commerce (ACC) was founded.

Now in its 30th year, the Asian Chamber is looking to increase its programs and presence in Houston as it fosters economic and business development through civic advocacy, networking, collaboration, and connections in the Houston Asian American communities and promotes trade between Houston and Asian countries.



Business hub: ACC's Director of Operations Barbara Gallo and Director of Community Development Paul Gor plan networking and programs from ACC's office at 3535 Briarpark Drive.

with our Chamber, we collectively empower our Asian community to have impact and influence in the Houston economy," said Gor. "We have come a long way in serving our community since June 1990. To reach 30 years says a lot about an organization."

Gor said ACC's anniversary will be a celebration and recognition of many ACC leaders and volunteers. "These are people who have labored together in building a strong foundation and paving the way for another 30 years of growth and support for the next generation of entrepreneurs," said Gor.

ACC's growth brought it to Westchase District three years ago when it relocated to new offices at 3535 Briarpark Drive. "The Chamber wants to have an economic impact and what better way to achieve than to be inside Westchase District where many businesses can take advantage of resources and opportunities," said Gor.

"Over the years, ACC has been a diverse, multicultural group focused on increasing business with the Asian community locally and abroad for all Asian countries, as well as improving the overall economic prosperity of Houston," said Paul Gor, ACC's director of community development. "We have grown to host numerous activities and programs that foster three specific pillars: Educate, Elevate and Empower."

For ACC, educational programs are how it helps elevate and grow its members' capacity. "Through collaborating with partners who are involved

Program enrichment

A signature event on ACC's calendar is the 2021 Trade Forum and Rising 10 Awards held in September. Each year, ACC hosts a business conference to educate and provide opportunities of trade through educational workshops and a business expo. This year's theme, "Rebound, Recover, Reengage" provided essential business tools and covered topics to help reengage customers as the country and our international border open up for business. Attendees had an opportunity to listen to representatives from six to eight countries talk about trade opportunities.

Member connections

ACC supports all who want to do business with the Asian community. As a result, it provides business owners connections to its members and extensive network to help promote trade.

The Asian Chamber of Commerce represents a specific demographic of Asian American and Pacific Islander-owned businesses. "From a simple startup to a well-established enterprise, all have rallied together to collectively help each other, and we invite those interested to become members to reap the benefits," said Gor.

The next 30 years

Bin Yu is ACC's chairman of the board. As founder of Utegration, Yu brings real-world business success to ACC and sees its future driven by board and staff involvement. "I envision we will focus the next few years rebuilding businesses who were deeply affected by the pandemic. In the long term, the Chamber will continue pushing programs in building entrepreneurs of all ages as well as advocating for Asian-owned business and providing opportunities of bilateral trade among our international partners."

Both Gor and Yu see a key measurement of ACC's impact as being a key contributor of Houston's booming economic growth and championing Asian representation of leaders among the city's diverse population. Find out more about ACC by visiting asianchamber-hou.org.



Entrepreneurial role model: Utegration founder and chairman Bin Yu chairs ACC's Board of Directors.

(Continued from Page 1)

Audiences Houston. Chess clubs, painting workshops and “yappy hours” are part of the programming mix. “We’re very excited about the activities we’ll be offering at Woodchase Park,” said Jullien. “We think these activities will give area residents a reason to visit the park again and again.”

Final punch list

Jullien is purchasing all the “toys” that will go into the park, including tabletop board games and a 10-foot chess board with oversized chess pieces. Maintenance Director Kelly Aylesworth is purchasing supplies for the park – everything from toilet paper to trash bags and work gloves. At its September meeting, the Westchase District board of directors approved four contracts for services at Woodchase Park. They include: ISS Facility Services (janitorial); Westco Grounds Maintenance (dog park porter services); Allied-Universal Security Services (security patrol) and BEMA Services (IT support).

Jullien has also hired a team of guest services attendants to coordinate with parks programming hosts and ensure that the park remains clean and safe for guests.

A sneak peak

Westchase District recently hosted a “sneak peak” for area apartment managers, building managers and representatives of area businesses to meet park programming partners and tour the park. Guests met at the Tracy Gee Community Center for a picnic lunch, then were transported to the park site via shuttle bus for an extended walk around the park.

Johnny Davis, who coaches at Paul Revere Middle School and serves on the Westchase District Advisory Board was pleased to participate in the sneak peak. “It’s great seeing hard work and collaboration paying off,” said Davis. “These parks feed into the residential area and help provide tons of healthy escapes and family friendly fun.”

Charris Powers, a neighborhood resident who participated in the sneak peak described the park as a “diamond” in the neighborhood. “I believe the citizens are just as excited and are strongly looking forward to this new sparkle in their community,” said Powers.



Sneak peak: The children’s play area features the Berliner Twist (foreground) and a slide (background), among other play amenities.

Opening soon

Ten days of opening festivities will begin on Thursday, October 28. The opening activities will feature a ribbon cutting with Mayor Sylvester Turner, plus samples of the day to day programming that Jullien will bring to the park. A Halloween Trick or Treat event, scheduled for 5-8 pm on October 31 will feature a pumpkin bounce house, pumpkin patch, arts & crafts, a face painter, balloon artist, a haunted house maze and photos with Captain America and Frozen’s Elsa and Anna.

The fall programming schedule is below. Visit woodchasepark.com for updates about the park opening festivities and a complete calendar of planned activities.



Three amigas: Melissa Venagas, Tracy Gee Community Center; Rayshell Ford, Westchase District; and Kristy Elmore, Grace Church/Friends of Westchase enjoy a sneak peak tour of Woodchase Park.



Steely look: These corten steel planter rings match the corten steel signage found in the park.



Park within a park: Canines (and their humans) will enjoy the features of the fenced dog park within Woodchase Park.

OCTOBER

MON 11	Reading Express	9 am
TUE 12	Tai Chi Yappy Hour	9 am 5 pm
WED 13	Walk Club Zumba	9 am 6 pm
THU 14	Yoga	6 pm
SAT 16	Boot Camp	9 am
SUN 17	Chess Club	4 pm
MON 18	Reading Express	9 am
TUE 19	Tai Chi	9 am
WED 20	Walk Club Zumba	9 am 6 pm
THU 21	Yoga	6 pm
FRI 22	WITS	4 pm
SAT 23	Boot Camp YAH YAH	9 am 2 pm 3 pm
SUN 24	Chess Club	4 pm
MON 25	Reading Express	9 am
TUE 26	Tai Chi	9 am
WED 27	Walk Club Zumba	9 am 6 pm
THU 28	Grand Opening Ribbon Cutting Yoga	11 am 6 pm
SAT 30	Boot Camp Family Picnic on the Lawn YAH YAH	9 am 11 am 2 pm 3 pm
SUN 31	Trick or Treat	5 pm

NOVEMBER

MON 1	Reading Express	9 am
TUE 2	Tai Chi Yappy Hour	9 am 5 pm
WED 3	Walk Club Zumba	9 am 6 pm
THU 4	Yoga	6 pm
FRI 5	Food Truck Friday WITS	11 am 4 pm
SAT 6	Boot Camp Ask a Master Gardener YAH YAH	9 am 10 am 2 pm 3 pm
SUN 7	Chess Club	4 pm
MON 8	Reading Express	9 am
TUE 9	Tai Chi	9 am
WED 10	Walk Club Zumba	9 am 6 pm
THU 11	Yoga	6 pm
SAT 13	Boot Camp	9 am
SUN 14	Chess Club	4 pm
MON 15	Reading Express	9 am
TUE 16	Tai Chi	9 am
WED 17	Walk Club Zumba	9 am 6 pm
THU 18	Yoga	6 pm
FRI 19	WITS	4 pm

WOODCHASE PARK OPENS OCT. 11. GRAND OPENING FESTIVITIES OCT. 28 – NOV. 6

SAT 20	Boot Camp YAH YAH	9 am 2 pm 3 pm
SUN 21	Chess Club	4 pm
MON 22	Reading Express	9 am
TUE 23	Tai Chi	9 am
WED 24	Walk Club Zumba	9 am 6 pm
SAT 27	Boot Camp	9 am
SUN 28	Chess Club	4 pm
MON 29	Reading Express	9 am
TUE 30	Tai Chi	9 am

WED 8	Walk Club Zumba	9 am 6 pm
THU 9	Yoga	6 pm
SAT 11	Boot Camp	9 am
SAT 12	Chess Club	4 pm
MON 13	Reading Express	9 am
TUE 14	Tai Chi	9 am
WED 15	Walk Club Zumba	9 am 6 pm
THU 16	Yoga	6 pm
FRI 17	WITS Painting Workshop	4 pm 6 pm
SAT 18	Boot Camp YAH YAH	9 am 2 pm 3 pm

DECEMBER

WED 1	Walk Club Zumba	9 am 6 pm
THU 2	Yoga	6 pm
FRI 3	Christmas Celebration	5 pm
SAT 4	Ask a Master Gardener YAH YAH Boot Camp	10 am 2 pm 3 pm 4 pm
SUN 5	Chess Club	4 pm
MON 6	Reading Express	9 am
TUE 7	Tai Chi Yappy Hour	9 am 5 pm

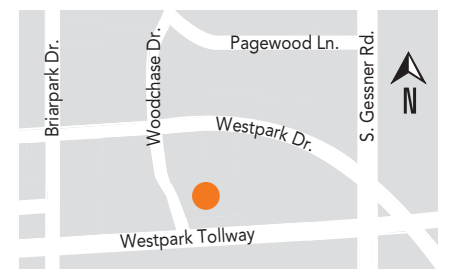
SUNDAY, OCTOBER 31
TRICK OR TREAT

FRIDAY, DECEMBER 3
CHRISTMAS CELEBRATION

WITS - Writers in the Schools
YAH - Young Audiences of Houston

Schedules are subject to change.
See our website for updates.

It’s what **Houstonians** wait for all year long. The little nip in the air that let’s you know cooler weather is coming. Also on the way are months of fun activities at Westchase District’s newest park, **Woodchase Park**. And special celebrations for **Halloween** and **Christmas** will make Woodchase Park your go-to spot for holiday festivities. Now you have the perfect place to wear all those sweaters. Button up!



WOODCHASE PARK
3951 Woodchase Drive
woodchasepark.com